

Willoughby ATC, London Road

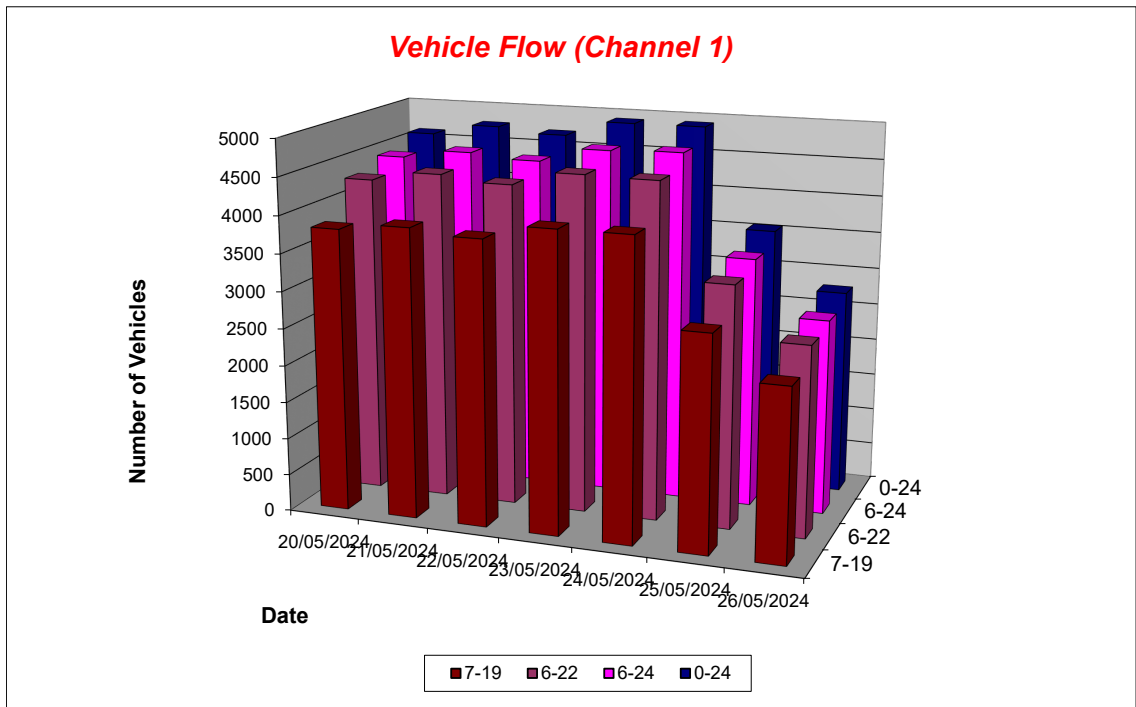
Produced by Road Data Services Ltd.

Channel 1 - Northbound

Vehicle Flow

Week 1

Hr Ending	20/05/2024 Monday	21/05/2024 Tuesday	22/05/2024 Wednesday	23/05/2024 Thursday	24/05/2024 Friday	25/05/2024 Saturday	26/05/2024 Sunday	Weekday Average	Average
1	18	29	14	21	25	34	33	21	25
2	10	13	15	22	9	21	16	14	15
3	9	20	21	14	18	24	15	16	17
4	19	21	25	20	15	22	11	20	19
5	15	25	17	31	23	19	14	22	21
6	105	104	111	111	106	56	49	107	92
7	161	171	176	155	143	62	30	161	128
8	362	386	380	388	369	110	57	377	293
9	348	389	342	373	329	193	95	356	296
10	236	254	278	256	289	292	164	263	253
11	279	226	283	242	279	312	231	262	265
12	263	259	247	258	266	313	238	259	263
13	215	270	249	250	291	301	276	255	265
14	257	239	230	275	322	312	309	265	278
15	371	400	384	395	402	234	218	390	343
16	345	361	344	413	420	237	235	377	336
17	434	407	385	435	400	212	163	412	348
18	418	460	445	444	351	213	170	424	357
19	286	254	266	300	313	158	163	284	249
20	144	144	164	165	154	107	89	154	138
21	94	95	94	112	122	116	76	103	101
22	74	106	80	79	76	92	58	83	81
23	80	66	83	80	142	68	52	90	82
24	71	68	66	74	54	47	19	67	57
7-19	3814	3905	3833	4029	4031	2887	2319	3922	3545
6-22	4287	4421	4347	4540	4526	3264	2572	4424	3994
6-24	4438	4555	4496	4694	4722	3379	2643	4581	4132
0-24	4614	4767	4699	4913	4918	3555	2781	4782	4321



Willoughby ATC, London Road

Produced by Road Data Services Ltd.

Channel 1 - Northbound

Average Speed

Week 1

Hr Ending	20/05/2024 Monday	21/05/2024 Tuesday	22/05/2024 Wednesday	23/05/2024 Thursday	24/05/2024 Friday	25/05/2024 Saturday	26/05/2024 Sunday
1	46.0	45.8	45.9	45.2	46.0	44.5	43.1
2	49.8	47.6	45.7	48.7	38.2	48.5	47.5
3	47.7	46.1	46.5	47.4	50.6	48.0	43.2
4	50.3	46.5	46.2	50.5	46.4	46.5	40.9
5	50.5	46.6	46.0	45.4	48.5	45.7	44.6
6	48.9	47.7	46.6	48.4	48.4	46.1	45.9
7	46.9	47.5	45.3	48.0	46.7	46.8	47.3
8	44.5	44.8	44.4	44.1	43.9	46.2	47.2
9	42.4	42.6	42.1	42.9	42.6	41.5	43.1
10	41.3	41.2	38.7	41.7	42.0	40.3	43.6
11	40.4	41.8	39.9	41.3	40.5	41.0	41.1
12	38.1	41.1	39.6	41.1	40.0	41.8	38.7
13	43.0	42.5	41.0	41.7	41.1	43.0	40.3
14	42.1	40.8	40.4	41.1	42.2	42.1	42.6
15	42.8	41.2	41.4	41.9	41.7	41.5	44.2
16	43.6	42.9	43.6	42.6	42.1	41.8	41.7
17	42.9	43.2	41.8	42.6	39.8	43.2	42.9
18	42.8	43.7	42.3	44.3	42.2	43.7	44.5
19	41.4	44.1	43.7	43.2	43.1	43.5	43.6
20	43.9	44.7	43.4	45.1	45.1	45.7	45.4
21	45.5	44.2	45.4	45.2	44.0	44.7	43.7
22	45.8	41.0	46.1	43.9	43.7	42.7	45.0
23	47.2	44.2	44.2	45.9	42.8	44.7	42.8
24	49.1	45.5	47.5	46.8	43.8	42.8	48.0
10-12	39.3	41.4	39.8	41.2	40.3	41.4	39.9
14-16	43.2	42.0	42.5	42.3	41.9	41.6	42.9
0-24	43.1	43.1	42.4	43.2	42.4	42.7	42.7

Average (ALL)	42.8
Weekday Inter-Peak	41.5

Channel 1 - Northbound

85th Percentile

Hr Ending	20/05/2024 Monday	21/05/2024 Tuesday	22/05/2024 Wednesday	23/05/2024 Thursday	24/05/2024 Friday	25/05/2024 Saturday	26/05/2024 Sunday
1	52.5	54.3	58.6	53.1	52.3	51.9	52.1
2	58.6	53.5	52.1	56.1	40.4	56.4	59.4
3	55.9	51.6	53.3	54.5	59.4	55.2	50.1
4	58.9	53.6	52.8	58.8	53.7	55.8	47.4
5	56.4	53.5	52.7	50.6	57.3	51.9	51.6
6	56.2	54.8	52.2	54.3	53.7	51.4	51.1
7	53.2	53.5	51.0	55.2	52.8	54.8	53.9
8	50.0	50.4	49.4	50.7	49.6	53.5	56.5
9	48.5	48.0	47.7	49.3	48.9	49.7	51.8
10	48.1	47.4	44.9	48.6	47.7	48.0	49.9
11	46.6	47.7	45.8	47.7	46.4	48.1	47.3
12	48.7	46.5	46.6	46.9	46.8	48.3	47.6
13	49.5	47.9	46.8	49.4	47.2	49.9	46.8
14	49.5	47.6	47.1	47.7	48.3	49.0	49.6
15	49.5	47.4	47.6	48.4	48.2	47.9	50.5
16	49.3	49.8	49.8	48.7	49.3	48.5	49.3
17	48.4	48.9	46.9	48.8	49.0	50.2	48.4
18	47.9	50.0	48.2	50.0	48.5	50.3	50.8
19	49.3	49.2	49.8	50.4	48.9	50.2	50.0
20	51.1	50.8	51.3	50.7	51.7	52.3	51.2
21	52.5	51.1	51.9	52.5	51.8	51.2	50.7
22	52.1	46.0	51.4	51.4	49.9	50.5	52.4
23	52.9	50.3	50.0	53.4	49.2	53.8	50.6
24	57.6	52.1	55.4	53.7	50.3	50.6	55.6
10-12	48.0	47.1	46.3	47.3	46.6	48.2	47.7
14-16	49.4	48.6	48.8	48.6	48.8	48.2	50.0
0-24	50.2	49.4	48.9	50.0	49.3	50.0	50.0

85th %ile (ALL)	49.7
Weekday Inter-Peak	48.2

Willoughby ATC, London Road

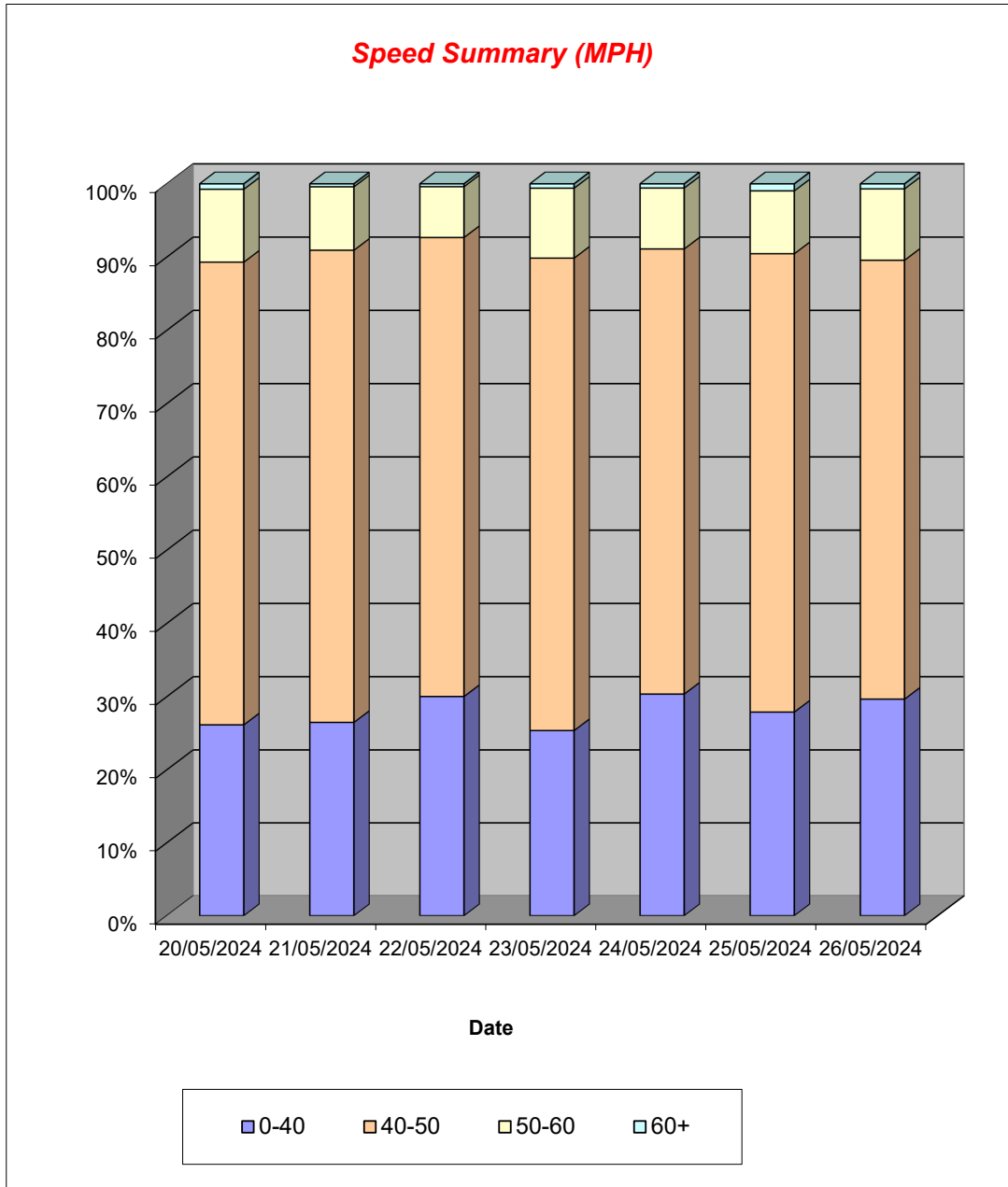
Produced by Road Data Services Ltd.

Channel 1 - Northbound

Speed Summary

Week 1

Speed (MPH)	20/05/2024 Monday	21/05/2024 Tuesday	22/05/2024 Wednesday	23/05/2024 Thursday	24/05/2024 Friday	25/05/2024 Saturday	26/05/2024 Sunday
0-40	1207	1263	1411	1247	1493	992	825
40-50	2914	3072	2944	3168	2988	2224	1666
50-60	459	413	326	469	409	305	271
60+	34	19	18	29	28	34	19
TOTAL	4614	4767	4699	4913	4918	3555	2781



Willoughby ATC, London Road

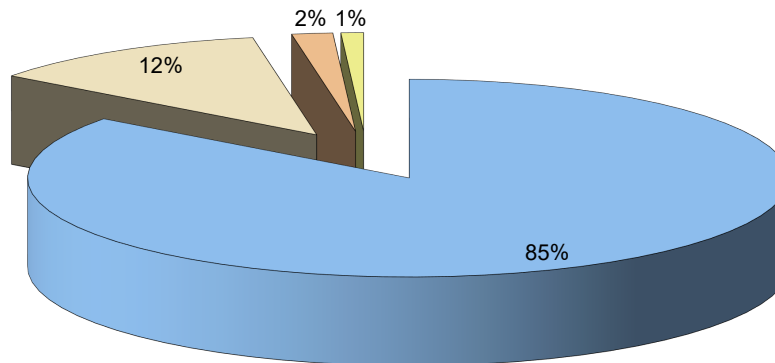
Produced by Road Data Services Ltd.

Channel 1 - Northbound

Vehicle Class

Classes Day / Time	Car / LGV / Caravan - 1	MGV - 2	OGV1 / Bus - 3,5,6,7,12	OGV2 - 4,8,9,10,11,13
20/05/2024				
7-19	3206	465	77	66
6-22	3613	514	82	78
6-24	3756	519	83	80
0-24	3899	540	86	-89
21/05/2024				
7-19	3249	503	73	80
6-22	3689	560	77	95
6-24	3808	573	78	96
0-24	3983	597	84	103
22/05/2024				
7-19	3216	502	69	46
6-22	3667	549	74	57
6-24	3805	557	74	60
0-24	3969	583	82	65
23/05/2024				
7-19	3329	551	87	62
6-22	3762	606	94	78
6-24	3899	617	99	79
0-24	4084	639	104	86
24/05/2024				
7-19	3333	555	79	64
6-22	3759	610	83	74
6-24	3933	622	85	82
0-24	4092	647	89	90
25/05/2024				
7-19	2536	299	41	11
6-22	2856	348	47	13
6-24	2960	356	48	15
0-24	3114	368	52	21
26/05/2024				
7-19	2081	216	15	7
6-22	2300	245	18	9
6-24	2361	253	20	9
0-24	2481	264	25	11
Average				
7-19	2993	442	63	48
6-22	3378	490	68	58
6-24	3503	500	70	60
0-24	3660	520	75	41

Total Vehicle Class Distribution



Willoughby ATC, London Road

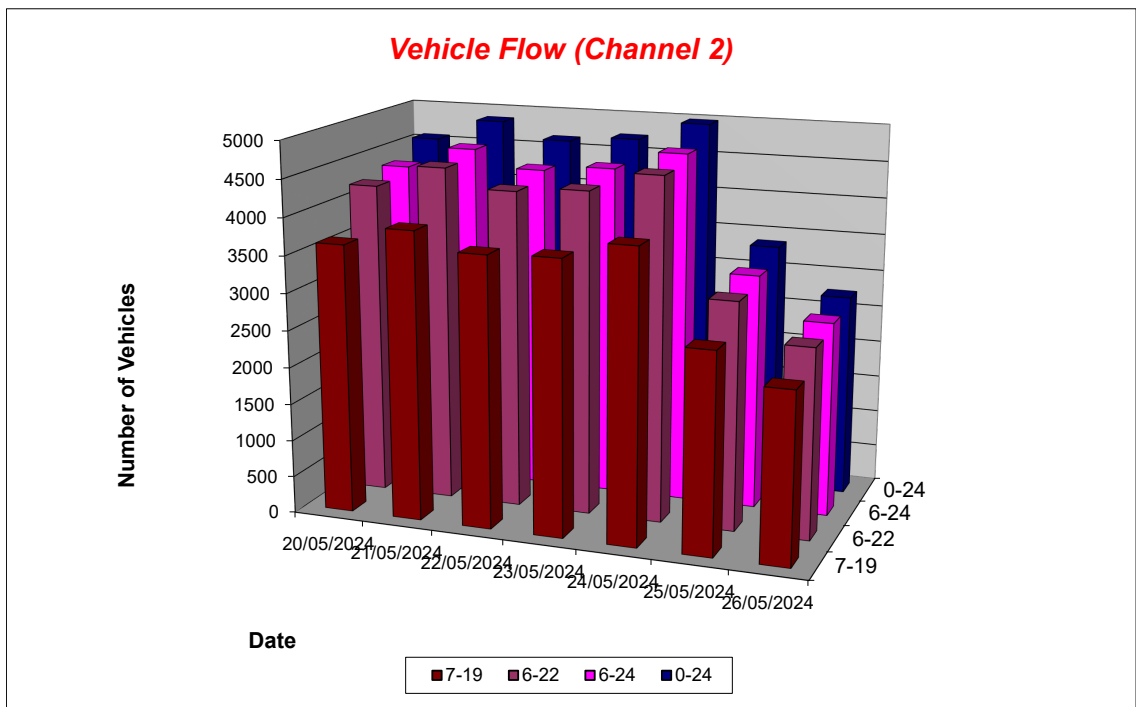
Produced by Road Data Services Ltd.

Channel 2 - Southbound

Vehicle Flow

Week 1

Hr Ending	20/05/2024 Monday	21/05/2024 Tuesday	22/05/2024 Wednesday	23/05/2024 Thursday	24/05/2024 Friday	25/05/2024 Saturday	26/05/2024 Sunday	Weekday Average	Average
1	25	25	19	19	31	31	30	24	26
2	13	14	14	8	13	19	20	12	14
3	22	14	24	16	18	19	17	19	19
4	16	12	9	11	19	18	12	13	14
5	35	34	42	35	28	33	7	35	31
6	128	141	140	155	137	59	24	140	112
7	259	274	254	274	276	61	29	267	204
8	409	429	382	406	364	128	72	398	313
9	421	475	449	441	393	142	59	436	340
10	301	292	296	274	269	200	127	286	251
11	243	267	210	219	218	263	208	231	233
12	202	259	261	242	271	275	209	247	246
13	239	270	247	217	289	278	279	252	260
14	260	302	243	273	264	253	265	268	266
15	269	284	288	302	324	239	211	293	274
16	305	294	296	303	349	226	251	309	289
17	350	386	360	342	475	244	227	383	341
18	393	373	352	385	444	234	214	389	342
19	244	262	271	283	257	215	177	263	244
20	143	182	164	185	197	144	116	174	162
21	98	111	115	125	126	101	63	115	106
22	94	73	97	84	100	72	61	90	83
23	66	64	76	83	72	68	34	72	66
24	33	29	37	40	44	42	34	37	37
7-19	3636	3893	3655	3687	3917	2697	2299	3758	3398
6-22	4230	4533	4285	4355	4616	3075	2568	4404	3952
6-24	4329	4626	4398	4478	4732	3185	2636	4513	4055
0-24	4568	4866	4646	4722	4978	3364	2746	4756	4270



Willoughby ATC, London Road

Produced by Road Data Services Ltd.

Channel 2 - Southbound

Average Speed

Week 1

Hr Ending	20/05/2024 Monday	21/05/2024 Tuesday	22/05/2024 Wednesday	23/05/2024 Thursday	24/05/2024 Friday	25/05/2024 Saturday	26/05/2024 Sunday
1	45.3	42.8	42.9	45.8	44.1	47.1	42.4
2	47.8	39.0	46.3	50.2	44.0	47.1	47.8
3	47.1	44.2	46.3	48.1	49.6	44.3	45.3
4	51.3	44.6	45.7	45.7	45.4	47.7	43.5
5	46.9	48.7	45.1	47.5	48.4	44.9	48.3
6	46.6	46.8	45.3	46.1	46.1	45.9	46.5
7	46.5	46.4	44.9	46.3	46.7	46.2	48.1
8	44.0	42.8	42.2	42.6	43.1	45.2	44.5
9	41.9	42.0	41.3	42.2	42.0	40.9	42.4
10	40.5	40.4	39.3	40.6	39.6	39.0	41.5
11	40.0	39.3	38.8	39.9	40.0	38.5	40.7
12	39.0	40.7	38.5	39.4	38.9	39.3	38.7
13	40.3	39.1	39.6	40.0	39.8	38.6	39.8
14	39.2	40.0	40.5	41.1	40.3	39.0	40.6
15	40.6	42.1	40.0	40.4	40.2	41.0	40.8
16	41.4	41.2	40.4	41.8	40.4	41.1	40.4
17	41.9	42.9	39.6	41.5	41.1	41.6	41.9
18	42.2	42.0	41.1	43.5	41.1	41.7	42.4
19	41.7	43.3	42.9	42.4	43.4	40.9	41.8
20	42.9	42.9	43.1	43.8	43.8	43.2	43.7
21	45.2	43.8	44.6	44.1	42.6	43.4	42.5
22	44.6	42.9	43.7	43.7	42.1	45.6	44.6
23	44.3	44.1	41.3	44.3	41.8	42.7	43.3
24	45.9	47.9	44.9	44.7	44.5	44.1	43.2
10-12	39.6	40.0	38.6	39.6	39.4	38.9	39.7
14-16	41.0	41.6	40.2	41.1	40.3	41.0	40.6
0-24	42.2	42.2	41.3	42.3	41.7	41.1	41.5

Average (ALL)	41.8
Weekday Inter-Peak	40.2

Channel 2 - Southbound

85th Percentile

Hr Ending	20/05/2024 Monday	21/05/2024 Tuesday	22/05/2024 Wednesday	23/05/2024 Thursday	24/05/2024 Friday	25/05/2024 Saturday	26/05/2024 Sunday
1	52.7	52.5	47.7	49.5	51.0	56.3	52.2
2	55.6	47.9	56.1	60.0	49.1	55.5	56.3
3	51.0	51.6	52.2	53.3	57.7	49.8	49.8
4	60.5	51.3	51.8	52.2	53.4	55.7	57.4
5	53.4	54.8	53.2	54.4	56.9	50.4	55.1
6	53.3	53.3	50.9	52.2	51.8	52.6	56.2
7	53.4	52.7	50.6	53.0	52.7	54.9	56.7
8	49.3	48.4	47.8	47.7	48.8	52.1	50.7
9	47.3	47.7	46.7	47.7	47.1	48.0	51.6
10	46.2	46.6	45.5	46.9	46.1	46.1	48.5
11	46.4	45.5	44.0	46.2	45.9	45.6	46.7
12	47.5	47.0	44.5	45.7	45.1	46.3	45.1
13	47.4	44.8	45.3	47.1	45.8	44.8	46.6
14	45.8	45.8	46.4	46.9	46.7	46.4	47.5
15	47.6	48.3	46.7	47.7	47.1	48.0	47.0
16	47.4	47.7	46.4	47.3	46.4	48.1	47.1
17	47.5	48.0	45.5	48.0	46.4	47.8	47.7
18	47.9	48.4	46.8	49.1	46.6	48.1	48.4
19	48.0	49.7	48.3	48.7	49.5	48.4	48.5
20	51.7	48.4	49.9	50.3	50.6	48.6	50.3
21	52.6	50.0	50.5	50.5	50.0	50.4	48.8
22	50.1	48.2	50.8	50.9	50.3	53.6	51.6
23	51.2	51.1	48.7	51.1	47.6	50.1	51.0
24	52.7	55.0	53.8	52.2	50.8	54.7	50.2
10-12	47.1	46.3	44.3	45.9	45.5	46.0	46.0
14-16	47.5	47.9	46.5	47.6	46.8	48.0	47.1
0-24	49.0	48.6	47.6	48.8	48.2	48.5	48.5

85th %ile (ALL)	48.5
Weekday Inter-Peak	46.7

Willoughby ATC, London Road

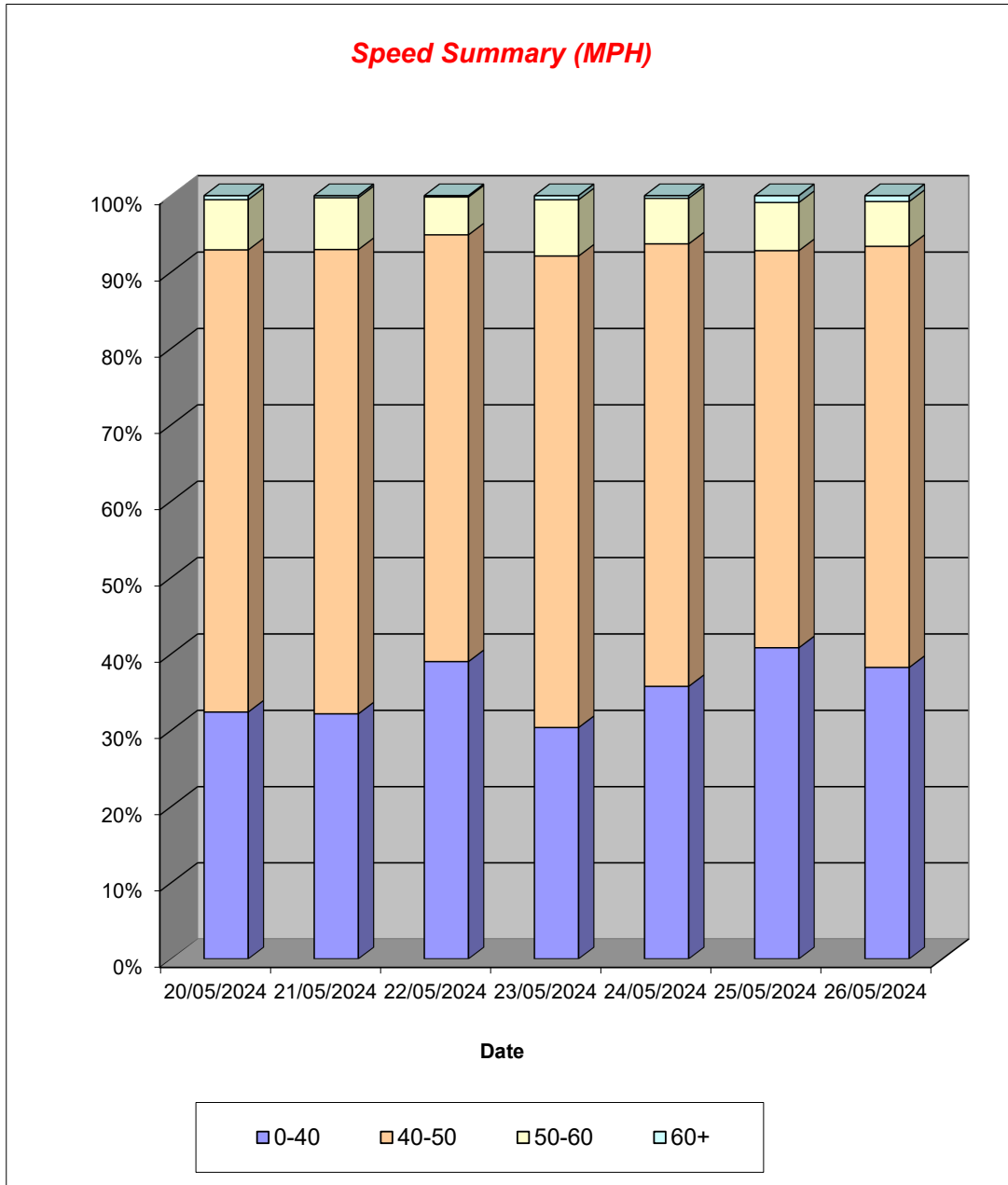
Produced by Road Data Services Ltd.

Channel 2 - Southbound

Speed Summary

Week 1

Speed (MPH)	20/05/2024 Monday	21/05/2024 Tuesday	22/05/2024 Wednesday	23/05/2024 Thursday	24/05/2024 Friday	25/05/2024 Saturday	26/05/2024 Sunday
0-40	1480	1565	1812	1434	1780	1373	1050
40-50	2764	2958	2596	2915	2884	1749	1514
50-60	300	330	230	348	297	212	161
60+	24	13	8	25	17	30	21
TOTAL	4568	4866	4646	4722	4978	3364	2746



Willoughby ATC, London Road

Produced by Road Data Services Ltd.

Channel 2 - Southbound

Vehicle Class

Classes Day / Time	Car / LGV / Caravan - 1	MGV - 2	OGV1 / Bus - 3,5,6,7,12	OGV2 - 4,8,9,10,11,13
20/05/2024				
7-19	3184	328	73	51
6-22	3722	362	76	70
6-24	3815	366	76	72
0-24	4029	378	82	79
21/05/2024				
7-19	3371	361	89	72
6-22	3954	390	95	94
6-24	4043	392	95	96
0-24	4248	414	98	106
22/05/2024				
7-19	3217	306	78	54
6-22	3792	344	81	68
6-24	3892	351	83	72
0-24	4102	370	91	83
23/05/2024				
7-19	3208	333	78	68
6-22	3809	376	86	84
6-24	3919	381	87	91
0-24	4137	395	90	100
24/05/2024				
7-19	3369	368	96	84
6-22	3996	417	101	102
6-24	4099	424	101	108
0-24	4312	440	105	121
25/05/2024				
7-19	2478	168	26	25
6-22	2828	191	29	27
6-24	2930	197	29	29
0-24	3081	213	35	35
26/05/2024				
7-19	2142	136	17	4
6-22	2388	157	19	4
6-24	2452	159	20	5
0-24	2553	166	20	7
Average				
7-19	2996	286	65	51
6-22	3498	320	70	64
6-24	3593	324	70	68
0-24	3780	339	74	76

Total Vehicle Class Distribution

